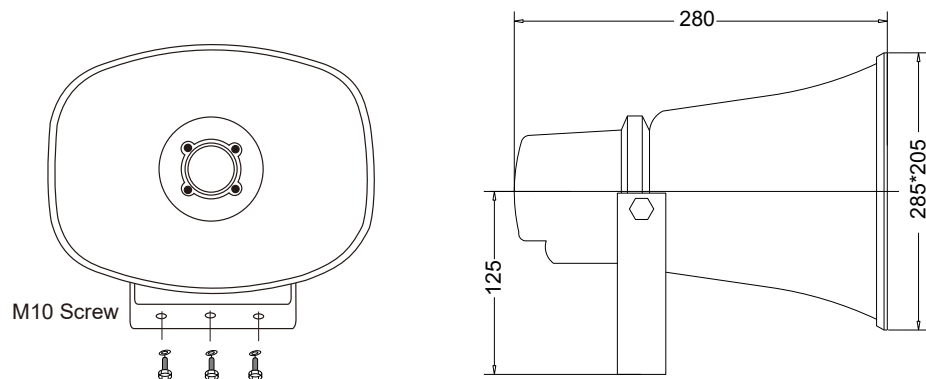


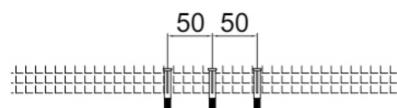


Dimension:

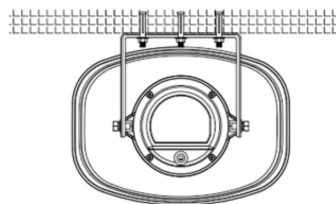


Installation Steps:

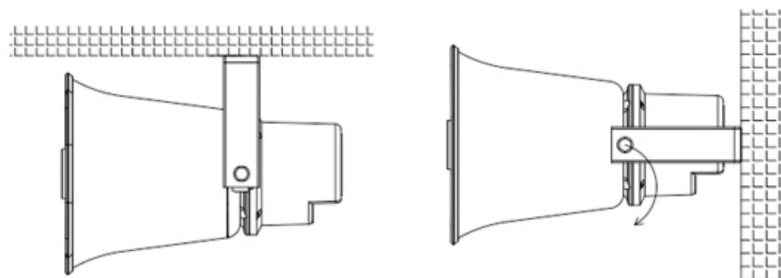
1. Drill 3 mounting holes suitable for M10 expansion screw on the wall, the distance between holes is 50MM



2. Align the hole on the bracket with pre-made screw on the way, lock the M10 nut, and fix the horn on the way



3. Adjust the required angle of the horn



Waterproof Horn Speaker



TCI-730H

User's Manual

Dear customers:

Your use of the TCI speaker series, we would like to extend my heartfelt thanks to you, the commitment to keep its quality.

Our speakers are widely used for hotels, commercial buildings, supermarkets, schools, leisure and entertainment venues, is your ideal choice.

For your installation, commissioning and use of this product, the installation please read this note.

Safety Tips

- Please be sure to use the former reading detailed notes.
- Really pay attention to this manual and a safety with the important warning.
- Recommend that you keep this manual for future reference.

Common warning signs and security

The manual shown warning signs and security is to prevent the improper operation due to personal injury arising from the loss of property, please read before using this product must understand that this manual security symbols and Warning to indicate fully aware of potential risks.



Warning

Such as the inappropriate use of staff will cause injury, death and property damage.

When installed loudspeakers

- Definitely will not be allowed to speakers and any exposure in the rain-wet or water, may be inconsistent with , or fire.
- Restricted by the provisions of the speakers on the voltage, such as the us of high voltage may cause electric shock or fire disaster. Is no pruning, distorted, or replacement of damaged wires.
- Avoid instability in the installation or set up speakers, such as shaking the table or flat surface , the speaker can avoid falling caused personal injury or property damage.
- Speakers will be installed in support of the speaker or the weight of a solid shelf. Speaker swap can be avoided caused personal injury or property damage.
- Wet hands must not be admitted into or plugs, may lead to electric shocks.
- The allocation of plugs, make sure that pull plugs, rather than pull wires.
The use of a damaged power line of machinery may cause fire or electric shock.
- Mobile speaker, you plug the prior allocated. If the speaker and plugs may be moving together will cause fire or electric shock. For plugs, identified as plugs for grip.
- Will not be allowed to speakers on the vent cover, may cause internal heating caused by the fire.
- Avoid speakers installed in the humidity or dust, direct contact with the sun from the near-electric, or smoke or steam, may cause fire or electric shock

Features:

- ※ High-strength ABS material
- ※ Waterproof and dust protected IP66 level
- ※ Wide frequency, wide coverage and strong penetration
- ※ Two power taps 15W & 30W.

Specifications:

Model	TCI-730H
Frequency Response	400Hz-6KHz
Sensitivity	105±3dB
SPL	116dB 100V 15W
Rated Power	30W
Power Taps	15W/30W
Line input	100V
Material	ABS
Finished Colour	White
Unit Weight	2Kg
Dimension(mm)	285*280*205