



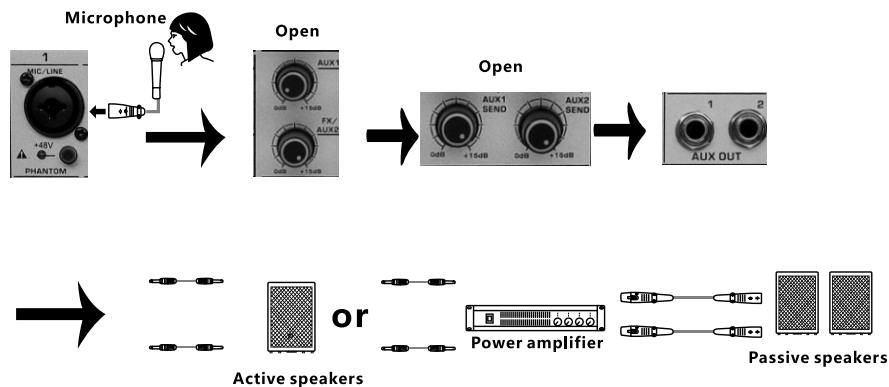
Mixer



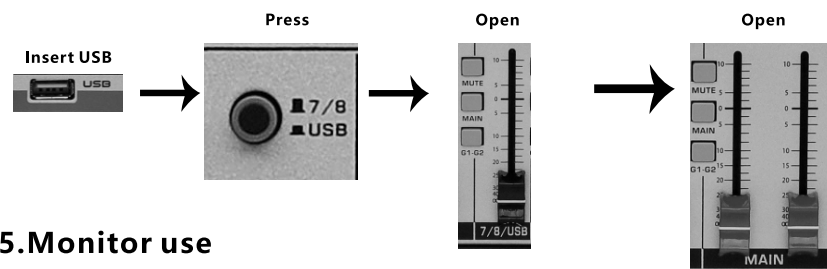
TCI-PFX8 / TCI-PFX12 / TCI-PFX16

User's Manual

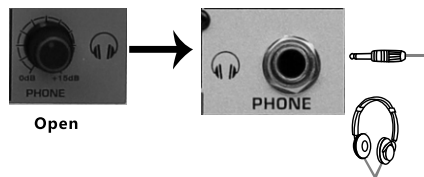
3.Use of AUX



4.USB



5.Monitor use



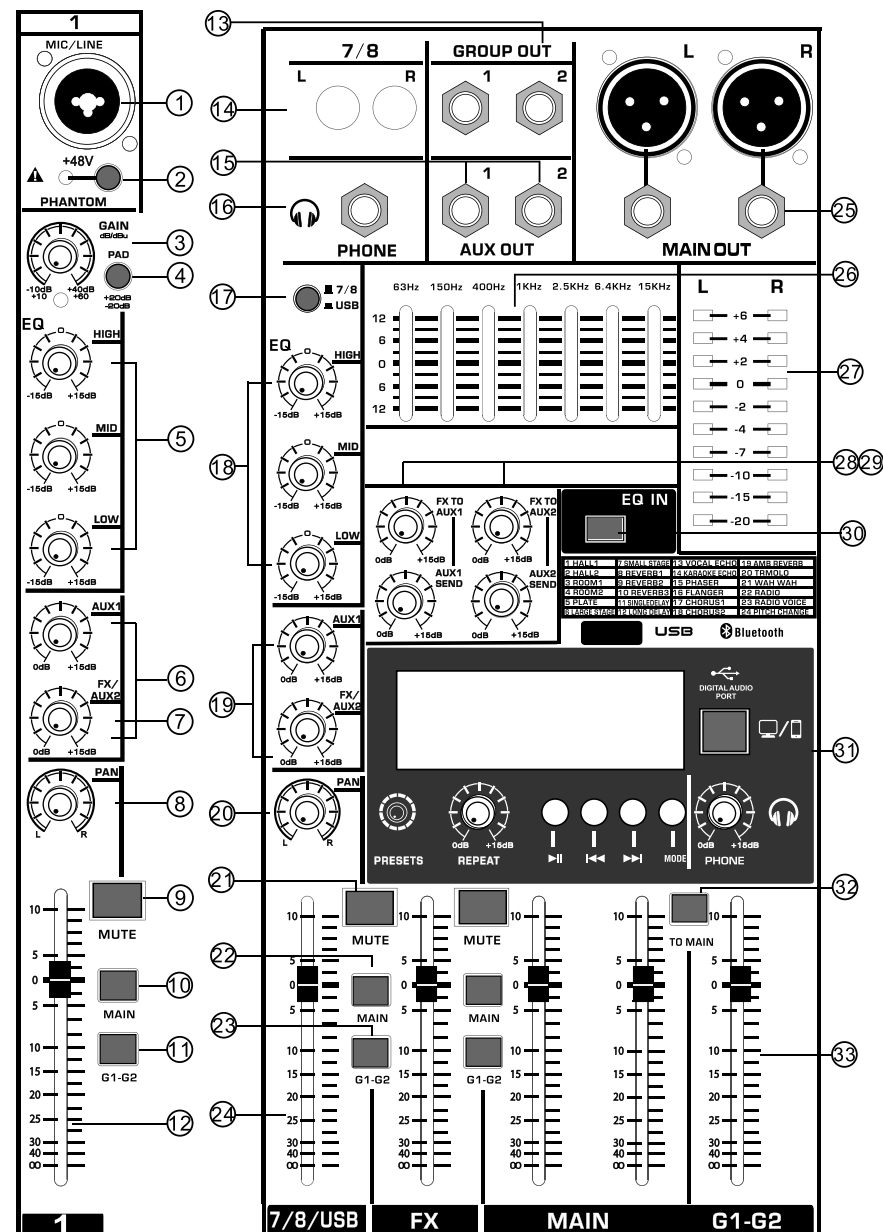
6.REC use

REC is the micro-signal output port of the mixer, which can be connected to a professional recorder or a computer equipped with recording software.

7.USING VOLTAGE

Please note that the mains voltage is 110V--- 240V, If it is lower than 220V, please use a voltage regulator, otherwise the insufficient power supply will cause current noise.

FRONT PANEL INSTRUCTIONS:



1.MIC MICROPHONE INPUT JACK

The balanced XLR socket accepts various balanced or unbalanced microphone input signals (1. ground wire 2. hot wire 3. cold wire).

LINE INPUT JACKS

1/4 inch jack, connect balanced or unbalanced high impedance input signal.

2.PHANTOM +48V SWITCH

This is switch toggles phantom power.Press this key to turn on / off phantom power.

3.GAIN CONTROL

Adjusts the input signal level. To get the best balance between the S/N ratio and the dynamic range, adjust the gain so that the PEAK indicator lights only occasionally and briefly on the highest input transients. The 60 to+10 scale is the MIC input adjustment range. The -40 to +10 scale is the Line input adjustments range. The -40 to +10 scale is the LINE input adjustment range.

4.PAD SWITCH

Cut down the signal sensitivity of each channel 20dB

5.EQUALIZER (HIGH. MID. LOW)

This the four-band equalizer adjusts the channels high. mid and low frequency bands.

Setting the knob to the "0" position produces a flat response in the corresponding frequency band, while turning to the left attenuates the band.

6.AUX CONTROL

Controlling the level of the auxiliary output channel without affecting the mixed amplifier signal.

Adjusts the level of input channel to AUX.

7.FX CONTROL

The aux send marked FX offers a direct route to the built-in effects processor.

Controlling the EFF volume of mono channel.

8.PAN Control

The PAN control determines the position of the channel signal within the stereo image. When working with sub groups, you can use the PAN control to assign the signal to just one output, which gives you additional flexibility in recording situations.

9.MUTE SWITCH

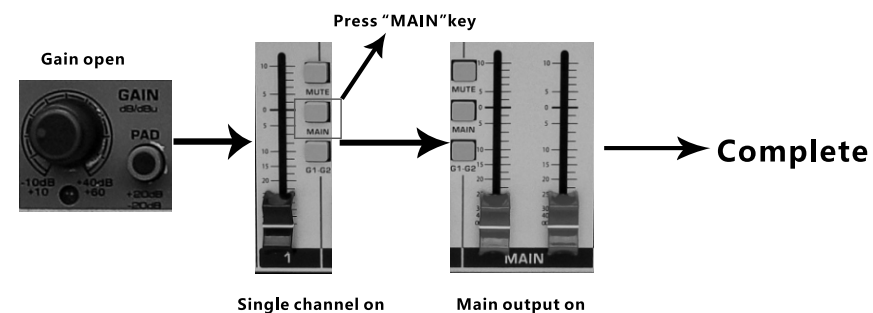
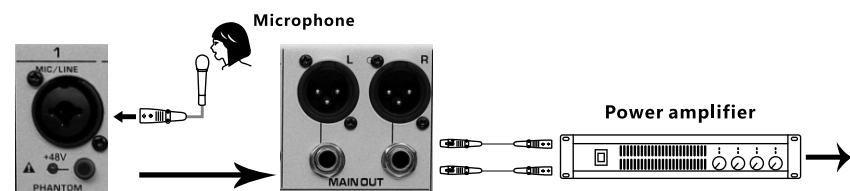
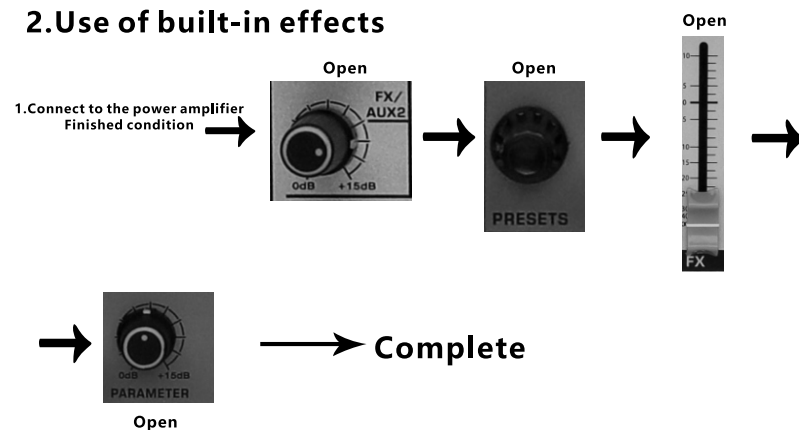
The accordingly channel will be mute after pressing this key.

10.MAIN

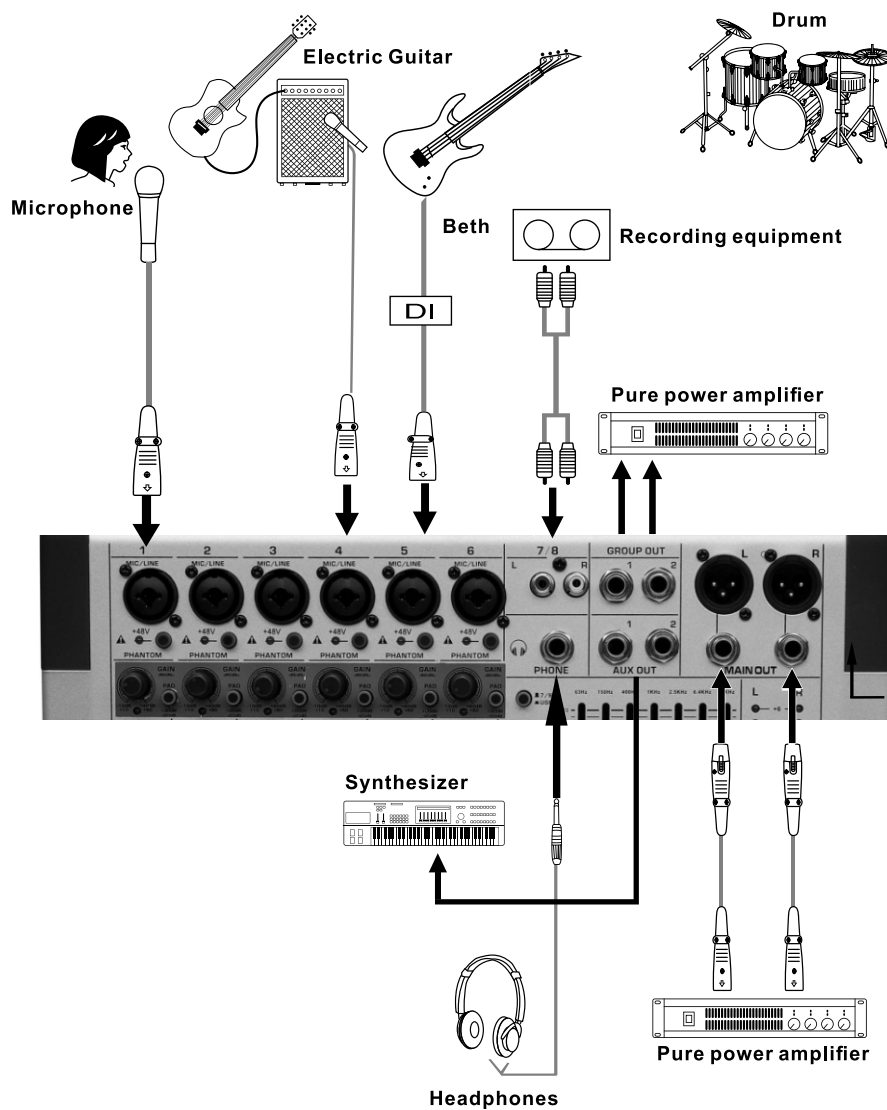
You can use MAIN-L/R fader after pressing "MAIN"switch.

11.G1-2=GROUP1-2

You can use G1-2 fader after pressing the switch.

EXAMPLES OF USE:**1.Use the amplifier****2.Use of built-in effects**

INPUT CONNECTION PARTS



12.CHANNEL FADERS

Adjusts the level of the channel signal. Using these fader to adjust the input level amount the various channels.

13.GROUP OUT(1-2)JACKS

You use these jacks to connect with the power another amplifiers driving speakers.

14.STEREO INPUT JACK

This is a stereo input channel, which consists of two sets of 1/4-inch jacks, which are divided into "LEFT" and "RIGHT" inputs. You can connect with cassette deck from here.

15.AUXOUT

The AUX SEND jack should be used when hooking up a monitor power amp. or active monitor speaker system. The relevant AUX path should be set pre-fader.

16.PHONES JACK

Connecting a pair of headphone to this TRS phone-type output jack.

17.TOGGLE KEY

When the key is released , the input signal for this channel is from stereo channel.

When the key is pressed , the input signal for this channel is from MP3 channel.

18.EQUALIZER (HIGH. MID. LOW)

This the four-band equalizer adjusts the channels high. mid and low frequency bands.

Setting the knob to the "0" position produces a flat response in the corresponding frequency band, while turning to the left attenuates the band.

19.AUX CONTROL

Controlling the level of the auxiliary output channel without affecting the mixed amplifier signal.

Adjusts the level of input channel to AUX.

FX CONTROL

The aux send marked FX offers a direct route to the built-in effects processor.

Controlling the EFF volume of mono channel.

20.PAN Control

The PAN control determines the position of the channel signal within the stereo image. When working with sub groups, you can use the PAN control to assign the signal to just one output, which gives you additional flexibility in recording situations.

21.MUTE SWITCH

The accordingly channel will be mute after pressing this key.

22.MAIN

You can use MAIN-L/R fader after pressing "MAIN" switch.

23.G1-2=GROUP1-2

You can use G1-2 fader after pressing the switch.

24.CHANNEL FADERS

Adjusts the level of the channel signal. Using these fader to adjust the input level amount the various channels.

25.MAIN OUT(L,R) JACKS

These jacks deliver the mixer's stereo output. You use these jacks, for example, to connect to the power amplifier driving your main speakers.

26.7-BAND STEREO GRAPHIC EQUALIZER

The graphic stereo equalizer allows you to tailor the sound to the room acoustics.

27.LEVEL METER

Show the level signal's strong.

28.AUX SEND CONTROL

Using these knob can control the AUX output jack. Users should turn these to right if you want to increase the volume of equipments, which connect with AUX connector.If you want to use AUX, you should turn on this knob firstly.

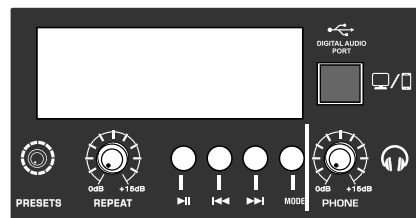
29.FX TO AUX

The EFF (FX)can be added into the AUX output. if you turn this knob to the right side.

30.EQ IN

This key is used to turn on/off the 7-BAND STEREO GRAPHIC EQUALIZER.

31.MP3 ZONE



Choose the EFF type.



Adjust the EFF parameters from this knob.



USB USB connector.



Adjust the volume of the headphone.



PC/SOUNDCARD CONNECTOR:Connecting PC or phone through this port.

▶|| P/P: PLAY/PAUSE CONTROL BUTTON

Short press to play or stop music.

◀◀ PREV:Prev/Volume”-”decrease control button

Short press the key to skip the previous song.

Hold the key for seconds to decrease the master volume.

▶▶ NEXT:Next/Volume”+”increase control button

Short press the key to skip the next song.

Hold the key for seconds to increase the master volume.

MODE Entering the MODE of MP3

32.TO MAIN

The signal of GROUP1-2 will be sent to the MAIN output.

33.CHANNEL FADERS

G1-2 FADER

Adjusts the level of the GROUP1-2.

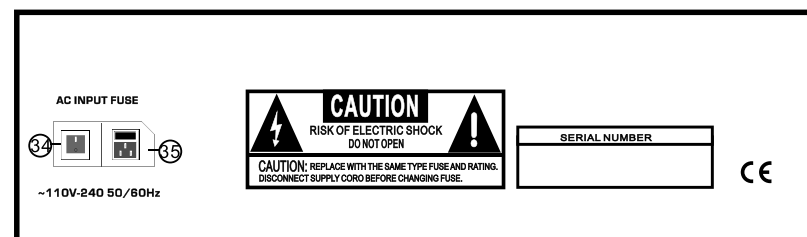
MAIN OUTPUT FADER

Adjusts the level of the MAIN output.

FX FADER

Adjusts the level of the FX output.

BACK PANEL INSTRUCTIONS:



34.POWER SWITCH

Use the POWER switch to turn on the mixing console. The POWER switch always be in the “off” position when you are about to connect your unit to the mains. To disconnect the unit from the mains, pull out the main cord plug. When installing the product, ensure that the plug is easily accessible.

35.FUSE HOLDER/IEC MAINS RECEPTACLE

The console is connected to the mains via the cable supplied, which meets the required safety standards. Blown fuses must only be replaced by fuses of the same type and rating. The mains connection is made via a cable with IEC mains connector. An appropriate mains cable is supplied with the equipment.