

User Manual



**Digital IP Network Paging Microphone
TCI-IP508**

Contents

• Safety Instructions.	1
• Notes.	2
• Product Description.	3
• Interface Instruction.	4
• Technical Parameters.	4
• Microphone Interface Instruction.	5
Login Interface.	5
System Setting.	6
Main Function Interface.	7
Terminal Broadcasting Interface.	7
Paging Interface Function Details	10
Terminal Intercom Function Details	11
Line Input Function Details	12
Real-time Monitoring Interface Function Details	13
Task Information Interface Function Details	14
Quick Operation Interface Function Details	14
Timing Interface Function Details.	15
SIP Intercom Function Details	15
Basic Setting Interface Details.	16

Safety Instructions

1. Read these instructions, retain and follow these instructions, heeding all warnings.
2. Please install the equipment according to manufacturer's instructions.
3. Do not install the equipment near any heat source, such as radiators, heat storage devices, stoves and other heating equipment.
4. Do not expose the equipment to water leakage or splashing water environment
5. Do not place any dangerous source on this product (such as containers filled with liquids or lit candles, etc.).
6. Please use attachments/accessories specified by the manufacturer.
7. Prevent the power cord from being stepped on or squeezed; especially at plugs, power sockets, and equipment power cord outlets
8. Please unplug the power plug of the product during lightning weather or when it is not used for long time.
9. Please clean the dust on the product, power plug, and socket regularly.
10. All maintenance should be performed by qualified maintenance personnel. Servicing is required when the product has been damaged in any way, such as the power cord or plug is damaged, liquid has been spilled on the product, the product has been exposed to rain or moisture, does not operate normally, or has been dropped.

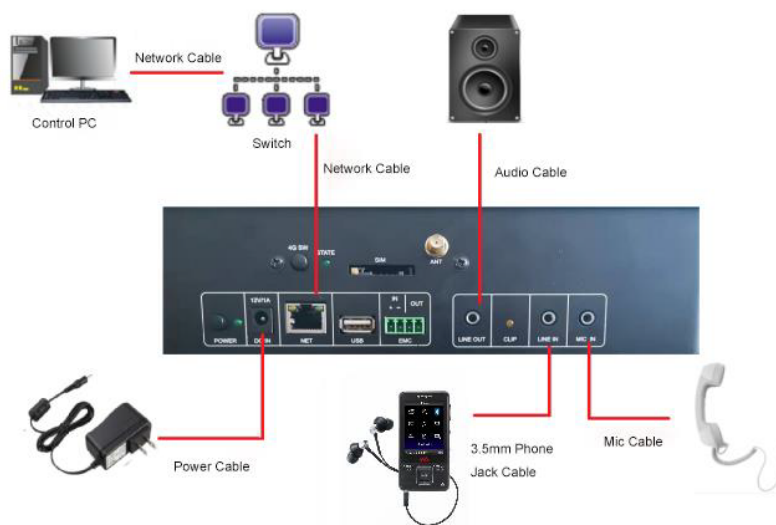
Notes

- If you find any of the following abnormal conditions during use, please turn off the power immediately, pull out the plug quickly and contact your nearest dealer. Do not continue to use the machine until the problem is solved, as it may cause fire or electric shock.
- If you notice smoke or a strange smell coming from the unit.
- If water or metal objects fall into the unit.
- If the unit is dropped or the casing is damaged.
- If the wire is damaged (the wire core is exposed, the wire is broken, etc.).
- If a fault is found (no sound).
- Because the machine contains high-voltage parts, to avoid fire or electric shock, the casing of this machine must not be opened. If you have any problems, please notify your nearest dealer.
- Never place cups, bowls, vases, or other objects containing liquids on the unit. If liquid is accidentally spilled into the machine, it may cause fire or electric shock.
- Never expose the unit to rain or any humid or water-prone place. It may cause electric shock or fire.
- Never put metal objects or flammable objects, nor coins, into the ventilation openings on the machine cover, as this may cause fire or electric shock.
- Please do not place heavy objects on the machine to avoid personal injury or property damage caused by the machine slipping.
- Please do not continue to use the machine when the sound is distorted. This indicates a malfunction and may cause high temperature and fire inside the machine.
- If the machine needs to be cleaned due to long-term accumulation of dust, please notify your dealer to clean the machine regularly to avoid damage to the machine or fire.
- The product is Class I equipment, and the power supply of the equipment must be connected to a power socket with a grounding device to ensure that the equipment is fully grounded.
- This product uses the power plug or appliance input socket as the disconnection device from the grid power supply. For safety reasons, it must be disconnected when necessary.
- If the panel of this machine is upgraded without further notice, please refer to the actual product for specific conditions.

Product Description

Product overview

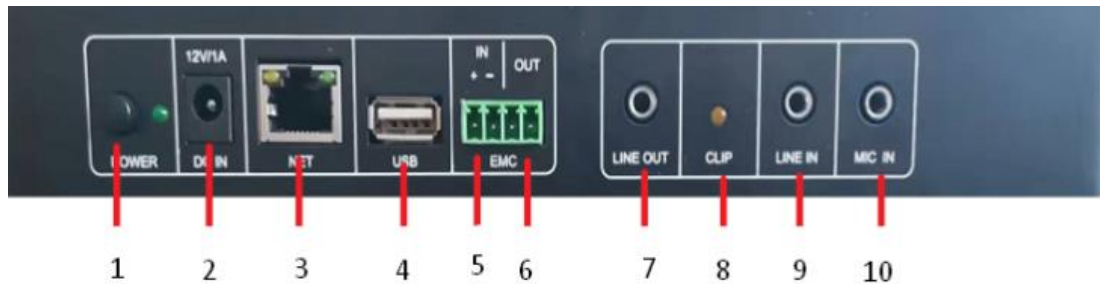
The IP paging microphone is the core control device of the IP broadcast and intercom system. It can initiate paging calls to all broadcast terminals in the system, and two way intercoms can be carried out between microphones. The equipment adopts a desktop design, integrated metal molding technology, exquisite and beautiful. 7 inch true color LCD touch screen, easy to operate. It is mainly deployed in the control center or the leader's desk and are used for broadcasting and intercom within the system. The system connection is as shown in the figure:



Features

1. Supports dual-mode calls, both hands-free and no-hands-free: external goose-neck microphone, built-in speaker, supports hands-free calls; with microphone interface, external microphone, dual-interface headset, for non-hands-free calls.
2. Equipped with a 7-inch true color LCD display, supports touch operation, and can directly configure the IP address and view the terminal status.
3. Supports network search configuration, no need to know the terminal IP address, direct addressing configuration.
4. Support network paging and two-way intercom functions.
5. It has a monitoring function for monitoring the environmental sounds collected by other terminals.
6. Supports static IP. The local IP address is the IP address of the broadcast server. It can span network segments and routes, and is easy to configure and use.
7. Comes with a 3.5mm standard audio interface, which can be connected to a dedicated microphone to facilitate the expansion of non-hands-free calls and for private calls.
8. Supports one local line output and can be expanded to an external power amplifier.
9. It has a broadcast function and can be used for general examinations or radio broadcast needs.
10. Supports media library on-demand and U disk on-demand.
11. It supports shortcut operations. You can set up shortcut keys on the PC and then directly click on the device to perform shortcut operations.
12. Supports scheduled point viewing, and can view all scheduled points of this account.
13. Supports text-to-speech conversion, with selectable device playback.

Interface Instruction



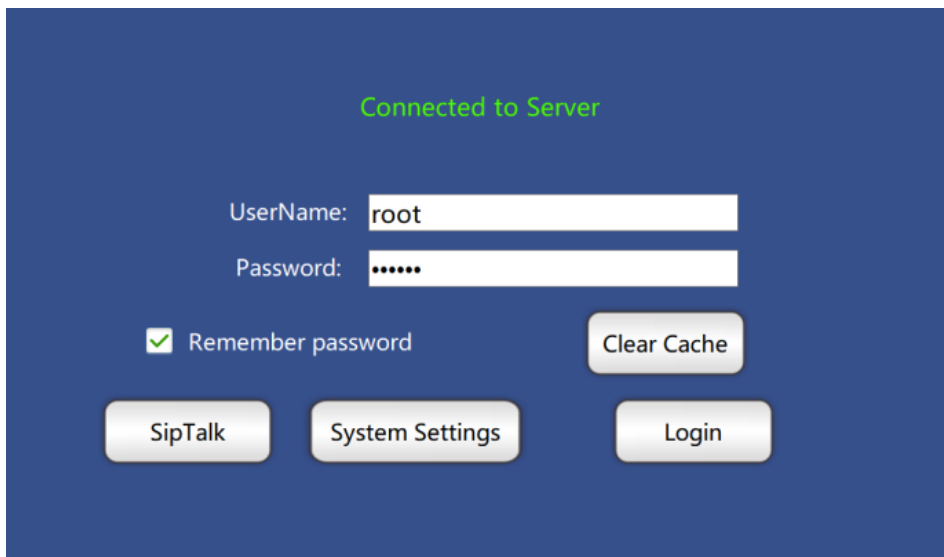
- 1.Power switch
- 2.DC12V power adapter interface
- 3.Network cable (LAN)
- 4.USB2.0 interface
- 5.Short-circuit input interface
- 6.Short-circuit output interface
- 7.Line out interface
- 8.Lost frame indicator light
- 9.Line in interface
- 10.Mic interface

Technical Parameters

- Power: DC12V/1A
- Audio format: MP3,MP4,
- Working temperature: 0℃~50℃
- NET: 100M Ethernet
- Screen: 7-inch RGB ---800*480 touch capacitive screen
- USB: USB2.0 high speed interface
- Rated power: 4W
- Audio bit rate: 16bit
- Frequency response: 20Hz~20KHz(-3dB)
- THD@1W: ≤1%
- SNR: >70dB
- Sampling rate: 48000KHz
- LINE IN level: 250mV (standard 3.5mm phone jack)
- LINE OUT level: 1.2V (standard 3.5mm phone jack)
- Max power consumption: 5W
- Built-in speaker: 8Ω/2W
- Transmission rate: 10/100Mbps
- Protocol: TCP/IP、UDP。
- Network delay: ≤50ms
- Dimension: 250*150*75mm

Microphone Interface Instruction

1. Login Interface



The login interface includes: entering user name, entering user password, server connection status display, whether to remember the password, system settings, login and SIP Talk.

<1> When the server connection status shows: Connected to the server, you can log in successfully. Otherwise, please enter the login settings and check whether the server IP and port are entered correctly.

<2> Click System Settings to enter the system settings page.

<3> Click Remember Password. The next time you start the software, the username and password from the last login will be used.

<4> Click Login and enter the correct username and password to enter the homepage of the system. After entering the wrong username or password 5 times, you will not be able to log in **within one minute**.

<5> Click "Clear the cache", the system will clean up the cache generated by the software running to free up disk space. After cleaning, the system will automatically restart.

<6> Optional SIP version, click to enter the SIP operation interface

2. System Setting



The system interface includes: Server IP, Local IP settings, format USB drive, confirm, return.

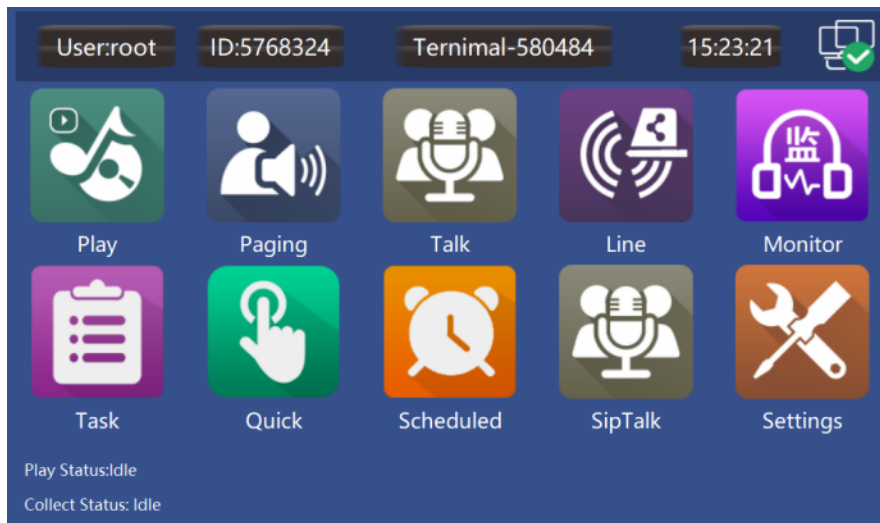
The server IP and local IP at the top can be clicked to switch to the corresponding page.

Confirm Button: Changing the server IP requires restarting the software, which will do so automatically.

Changing the local IP will automatically restart the system.

Format USB drive: simply plug in the USB drive, click "Format USB Drive," and confirm.

Main Menu Interface



<1> The main menu interface include 10 function module: terminal on-demand playback (Play), paging broadcast (Paging), terminal intercom(Talk), line input(Line), real-time monitoring (Monitor), task information (Task), shortcut operation (Quick), schedule task viewing (Schedule), SIP intercom (SIP Talk) and Settings.

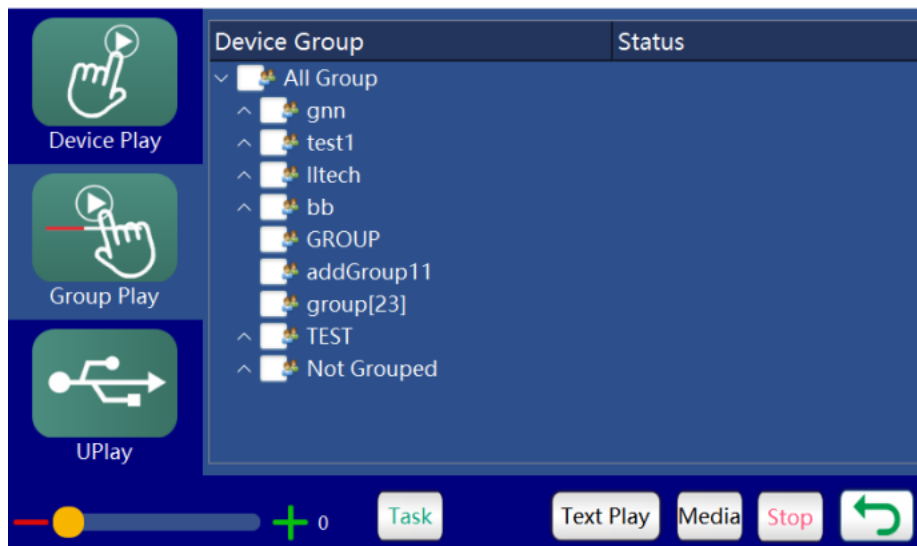
<2> Play Status: Whether this device is currently playing audio.

<3> Collect Status: Whether this device is currently acquiring line data.

Terminal Broadcasting Interface



<1> Terminal broadcasting (Device Play): all the terminals in the system are displayed in format. You can scroll up and down to select a terminal, and then click the Media button to select songs from the media library to play the audio.



<2> Group Broadcasting (Group Play): displays all terminals in the group in tree structure. You can scroll up and down to select a terminal, and then click the Media button to select songs from the media library to play the audio.



<3> USB Broadcasting (UPlay): After inserting the USB drive, wait a few seconds for the data to finish reading. Following the instruction in <1>, select the terminal in the table and click the Media button to access the USB drive's song selection menu and play audio.

<4> The volume bar in the lower left corner allows you to adjust the volume of the selected device. Drag or click.

<5> Task Button: Access the task interface.

<6> Text Play: Text-to-Speech Function

1. Import: Select a file from the TEXT directory of the USB drive and click OK to import the file content and filename.
2. Send: Start text-to-speech conversion, turning the input text into spoken audio, which will be played back on the selected device.
3. Preview: Turn the input text into spoken audio, which will be played back on the selected device.
4. Back Button: Return to the previous screen.

File Select <input type="checkbox"/> Select all				
No.	No.	File Name	Duration	Size
MUSIC	1	1k0dB.wav	01:00	43.95MB
	2	1K1V.wav	01:00	87.89MB
TEST AUDIO	3	3K1V.wav	01:00	87.89MB
	4	5K1V.wav	01:00	87.89MB
test Private Lib.	5	8K1V.wav	01:00	87.89MB
	6	10K1V.wav	01:00	87.89MB
	7	12K1V.wav	01:00	87.89MB
	8	15K1V.wav	01:00	87.89MB

Sequential Play Play 

<7> Media Play: Select a song from your media library to play.

1. Click the table on the left to select a directory in your media library.
2. Click the table on the right to select the corresponding song from that directory.

Order Play ☒

Random Play ☐

Order Loop ☐

Random Loop ☐

3. Click Sequential Play button to select the playback order. There are four playback orders:

Order Play: Plays songs in sequence, ending the task after each song.

Random Playback: Plays songs randomly, ending the task after each song.

Order Loop: Plays songs in sequence, restarting after each song, looping continuously without ending the task.

Random Loop: Plays songs randomly, looping continuously without ending the task.

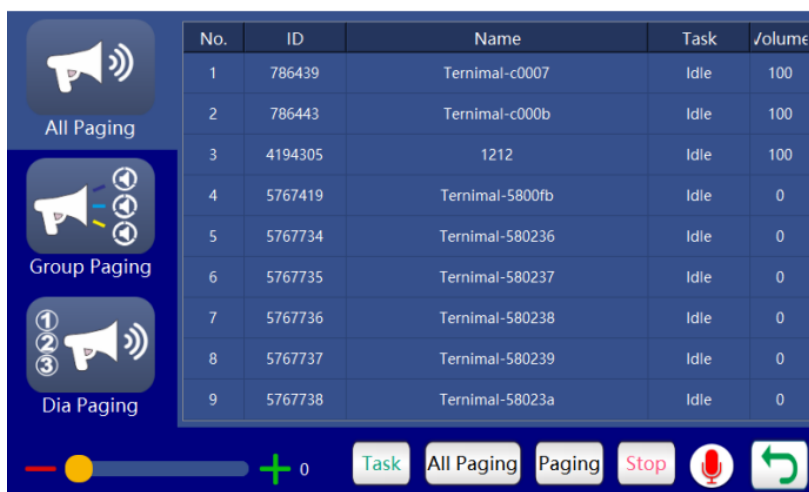
4. Select All button: select all songs in the current directory.

5. Play Button: Click to play the selected songs and return to the previous screen.

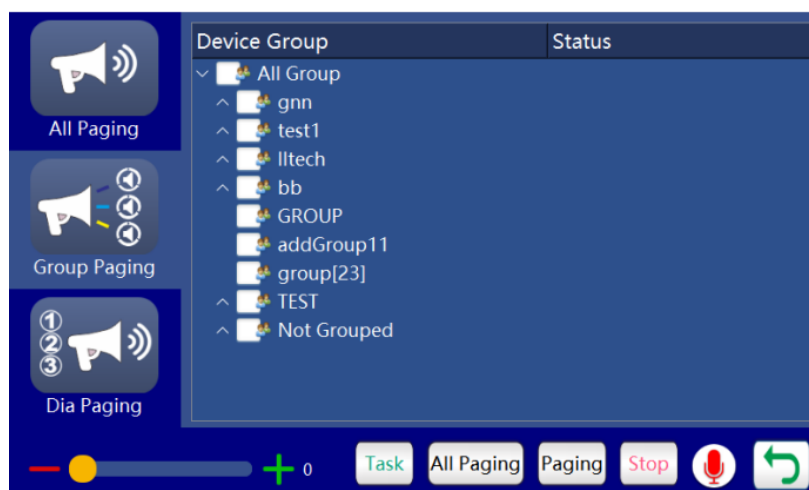
6. Back Button: Return to the previous screen.

<8> Stop Button: Ends the playback task on the selected device.

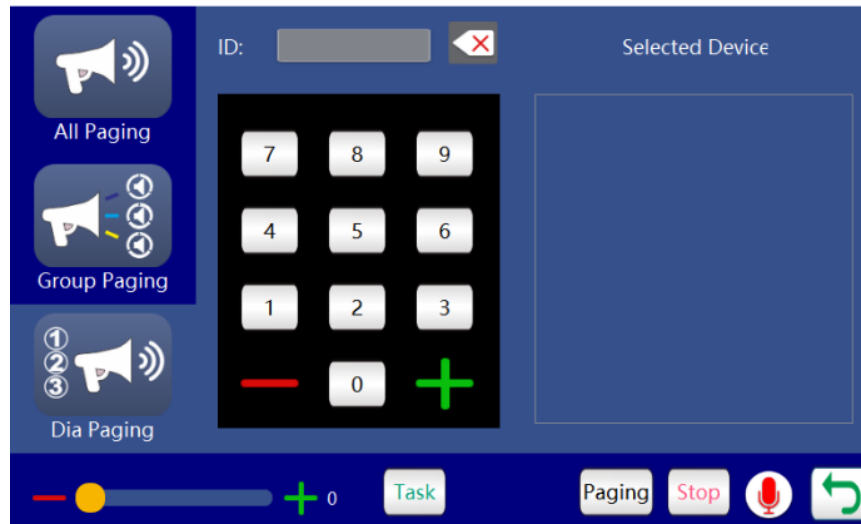
Paging Interface Function Details



<1> All Paging: all terminals in the system is displayed in a table format. Users can scroll up and down to select terminals, and then click paging button below to call the selected terminal.



<2> Group Paging: All terminals in the group are displayed in tree format. You can slide up and down to select the terminal, and then click the paging button below to page the selected terminal.



<3> Dial Paging: You can enter the device ID to be paged, add it to the target area, select the device in the target area, and click Paging.

+ : to add the selected device into target area

— : to remove the selected device

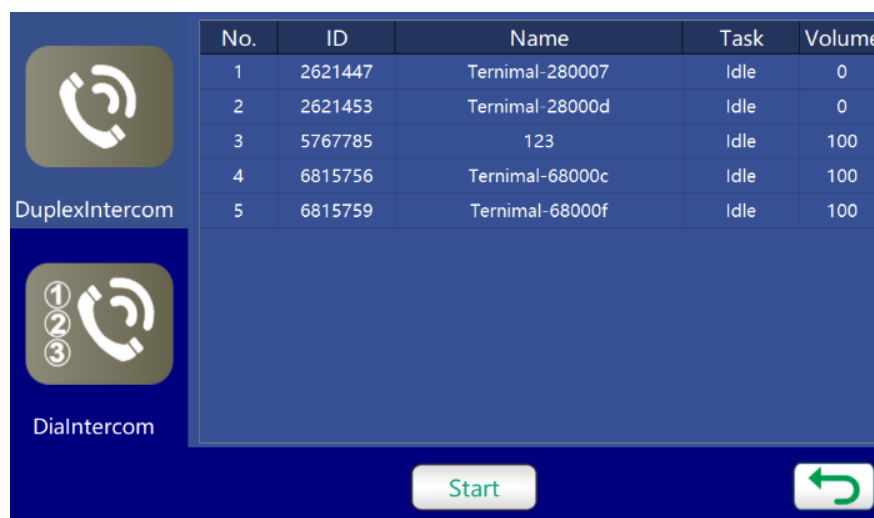
<4> Task: to check the paging tasks

<5> Paging: to page all devices

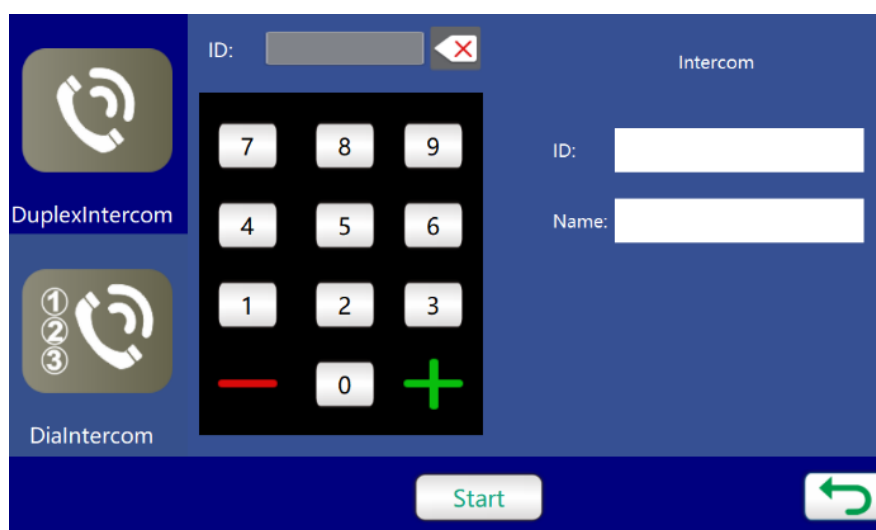
<6> Stop: to stop the executing program of the selected device. If there is no device selected, the stop button is to end the paging program of all devices.

<7> Mute: to mute the current microphone

Terminal Intercom Function Details

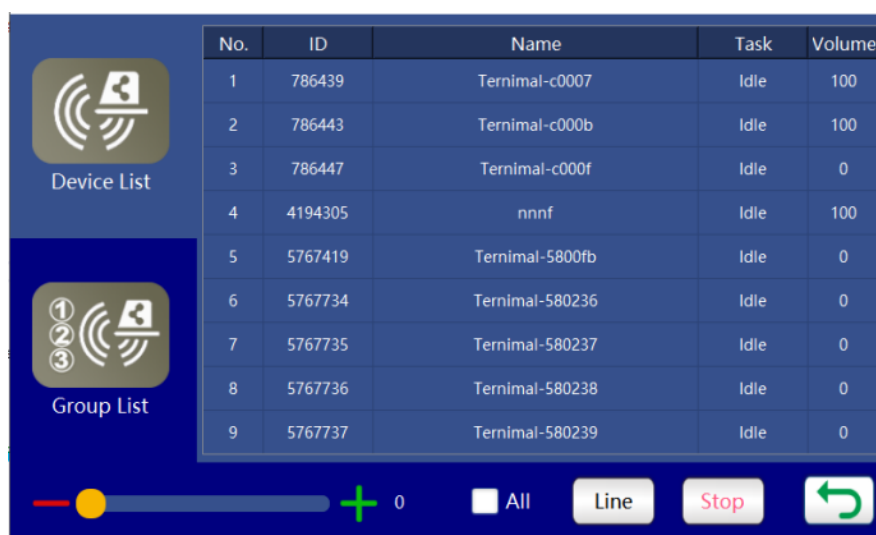


<1> Duplex Intercom: all terminals in the system is displayed in a table format. Users can scroll up and down to select terminals, and then click start button to initiate an intercom.

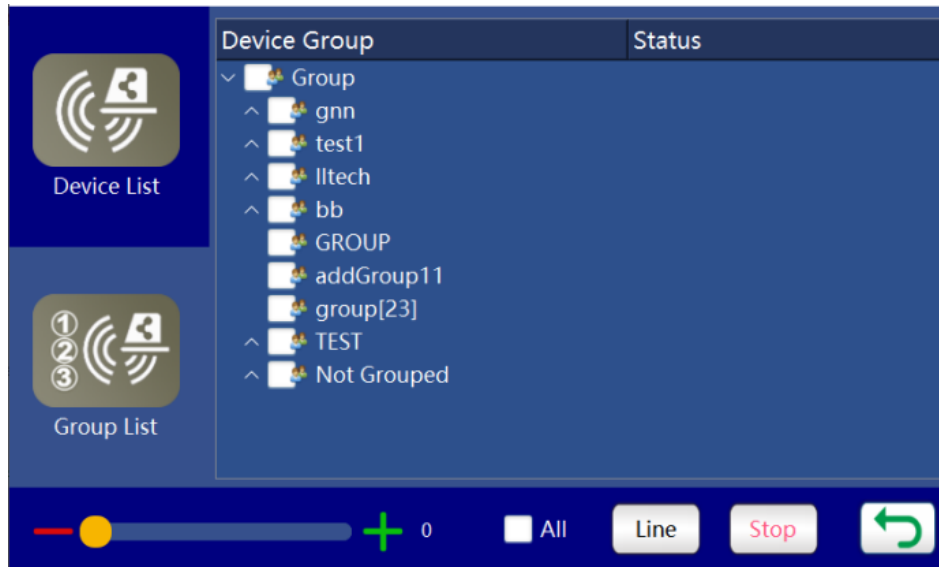


<2> Dial Intercom: enter the ID number of the intercom terminal, press the + button to add it to the right, and you can start an intercom. Press — button to delete the intercom device information on the right.

Line Input Function Details



<1> Device List: all terminals in the system are displayed in a table format. You can slide up and down to select the terminal and then click Line button to start line collection. (Line collection means that when this terminal is on-demand broadcasting, you can select other terminals to synchronize the audio source of this terminal. It can also be understood as the terminals you selected collect the audio source of this unit.)



<2> Group List: all terminals in the group are displayed in tree format. You can slide up and down to select the terminal, and then click the Line button to start line collection.

Real-time Monitoring Interface Function Details

Monitored Device				
No.	ID	Name	Task	Volume
1	786439	Ternimal-c0007	Idle	100
2	786443	Ternimal-c000b	Idle	100
3	5767419	Ternimal-5800fb	Idle	0
4	5767734	Ternimal-580236	Idle	0
5	5767735	Ternimal-580237	Idle	0
6	5767736	Ternimal-580238	Idle	0
7	5767737	Ternimal-580239	Idle	0

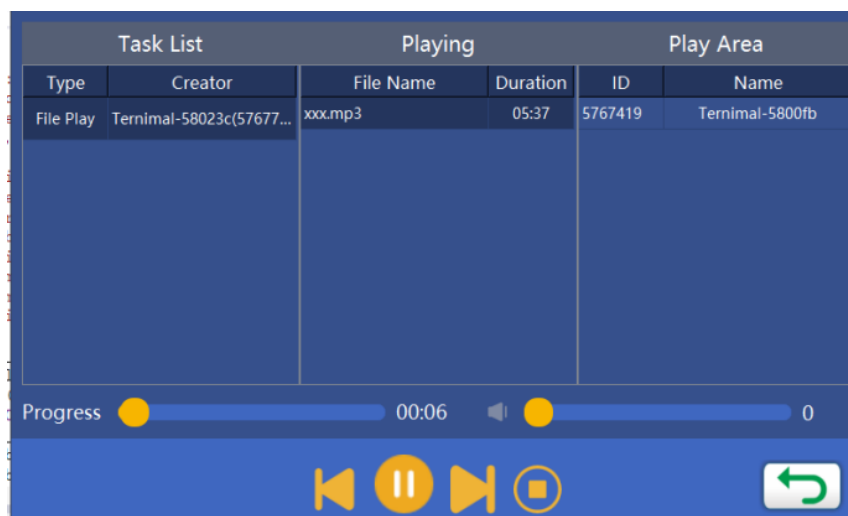
Monitored Device: list all the terminals being monitored

Sound Card: after selecting the terminal to be monitored, the microphone can listen to the on-demand audio of the terminal being monitored.

Ambient Sound: after selecting the terminal to be monitored, the microphone can monitor sound of the terminal being monitored.

Stop: end monitoring

Task Information Interface Function Details



Task List: display all tasks being executed by all the terminals in the system, including task type and task creator information.

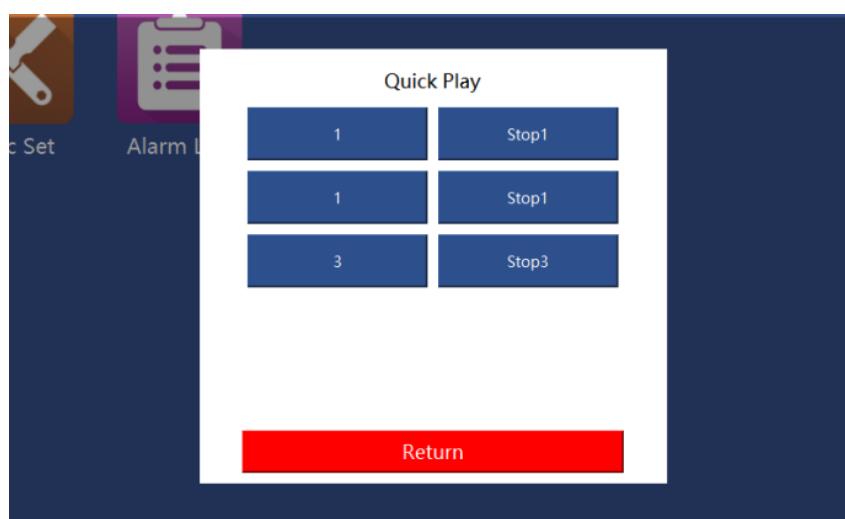
Playing: select a task in the task list, it will refresh this table, and you can check the broadcast sound source and duration of the task.

Play Area: Select a task in the task list, it will refresh this table, and you can check the terminal ID and name of the task.

Progress and Volume: Select a task in the task list, you can drag or click to adjust the playback progress and volume.

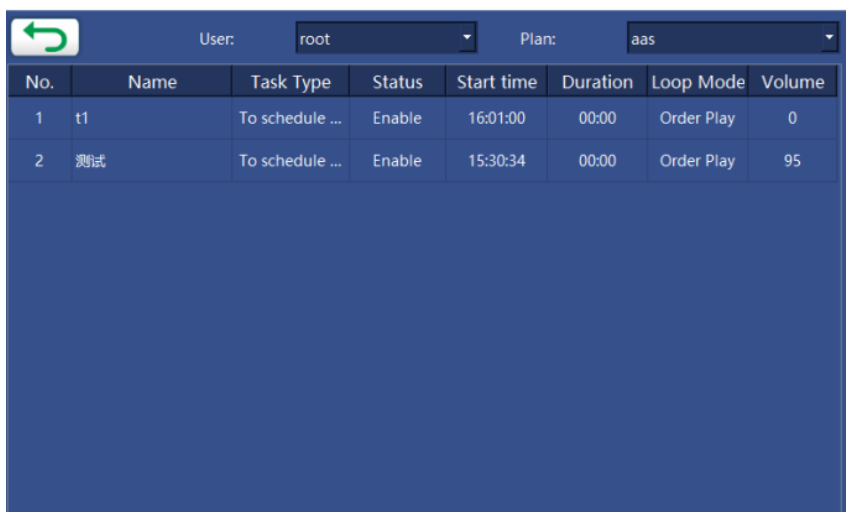
The four icon buttons at the bottom center are: Previous Track, Pause/Play, Next Track, and Stop Task.

Quick Play Interface Function Details



You can check the shortcut key set on PC software.

Timing Interface Function Details



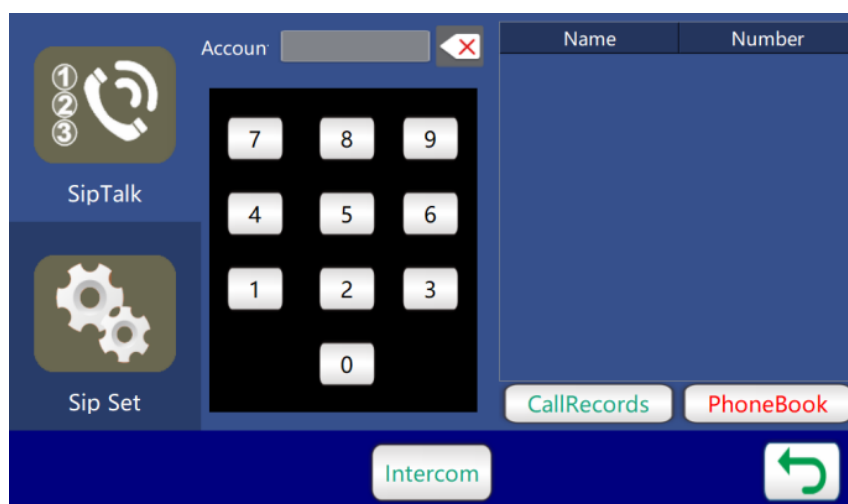
The screenshot shows a web interface for timing plans. At the top, there is a navigation bar with a green circular arrow icon, a 'User:' dropdown menu set to 'root', and a 'Plan:' dropdown menu set to 'aas'. Below this is a table with the following data:

No.	Name	Task Type	Status	Start time	Duration	Loop Mode	Volume
1	t1	To schedule ...	Enable	16:01:00	00:00	Order Play	0
2	测试	To schedule ...	Enable	15:30:34	00:00	Order Play	95

Sub-users can view local timing plans and timing points, while the root user can view timing plans and timing points for all users.

SIP Intercom Function Details

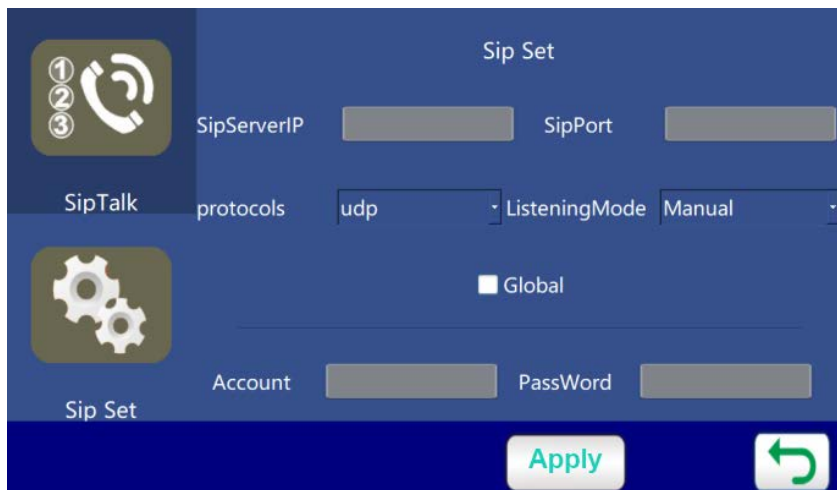
SIP features include dial-up intercom, call logs, phone book, and SIP configuration.



<1> Number Dial: Enter the SIP number on the dial and click Intercom to initiate a SIP call. Only numeric dialing is supported.

<2> Call Log: The call log function allows you to view outgoing call records and also select a call to initiate a SIP call.

<3> Phone book: The phone book allows you to view saved contacts and also select a contact to initiate a SIP call.

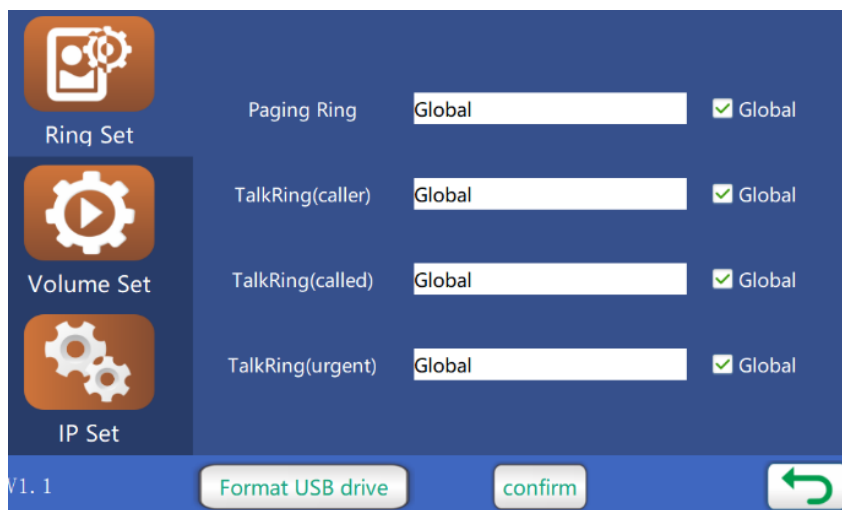


The 'Sip Set' configuration interface features a sidebar on the left with three icons: a phone handset (labeled 1, 2, 3), a gear (labeled 'SipTalk'), and two gears (labeled 'Sip Set'). The main area is titled 'Sip Set' and contains the following fields: 'SipServerIP' and 'SipPort' (text boxes), 'protocols' (a dropdown menu showing 'udp'), 'ListeningMode' (a dropdown menu showing 'Manual'), a 'Global' checkbox, 'Account' and 'PassWord' (text boxes), and an 'Apply' button. A green circular arrow icon is located at the bottom right.

SIP configuration includes setting the SIP server's IP address, SIP port, transport protocol, Listening mode, and SIP account and password.

SIP accounts only support numeric usernames. After configuration, click Apply to register with the server.

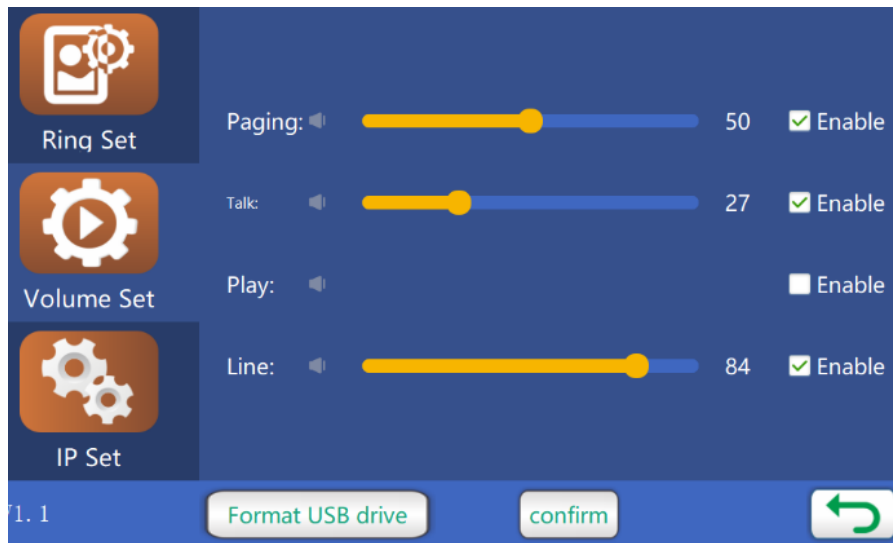
Basic Setting Interface Details



The 'Basic Setting Interface Details' shows a sidebar on the left with three icons: a person with a gear (labeled 'Ring Set'), a play button with a gear (labeled 'Volume Set'), and two gears (labeled 'IP Set'). The main area is titled 'Ring Set' and contains four rows of settings: 'Paging Ring', 'TalkRing(caller)', 'TalkRing(called)', and 'TalkRing(urgent)'. Each row has a text box containing 'Global' and a checked checkbox labeled 'Global'. At the bottom, there is a 'Format USB drive' button, a 'confirm' button, and a green circular arrow icon. The version number 'V1.1' is displayed in the bottom left corner.

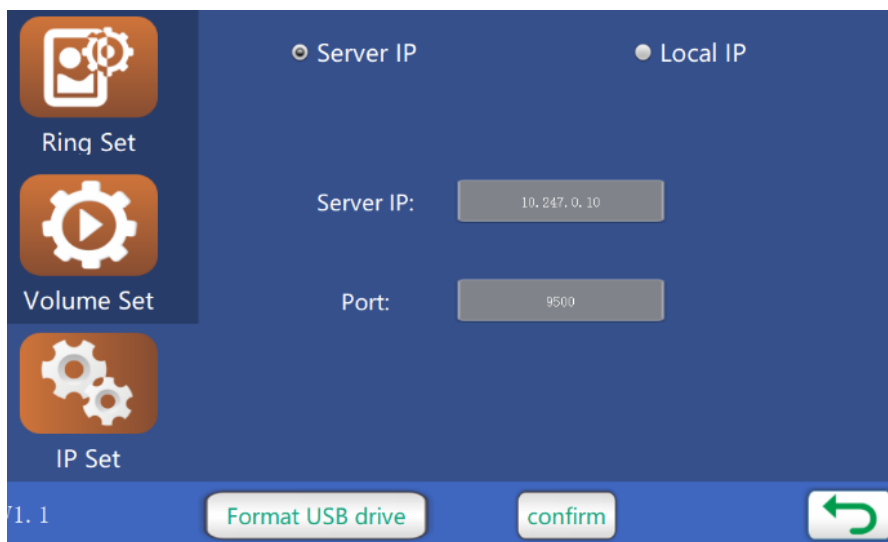
<1> Ringtone Set: there are 4 types of ringtones.

Each tone has a checkbox on the far right. Checking the box uses the global ringtone; deselecting it allows you to click the blank box to select your desired tone and apply it.

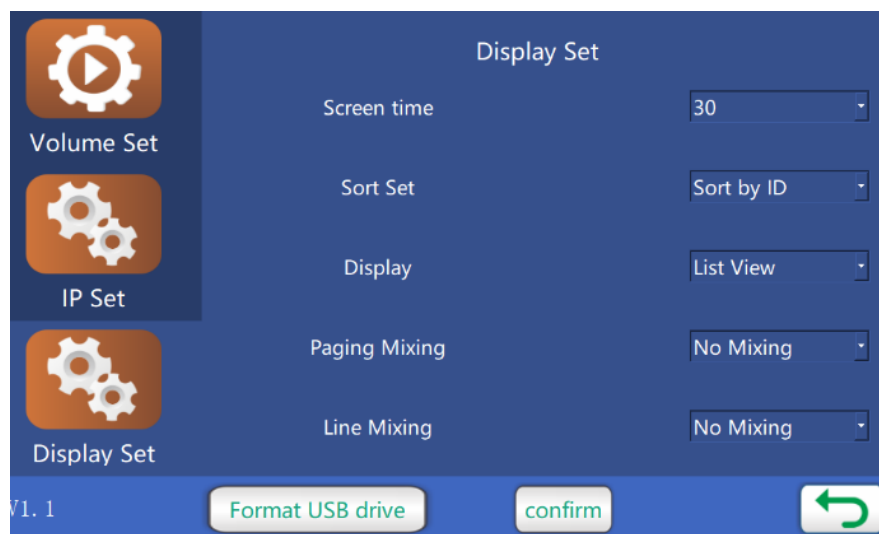


<2> Volume Set: paging volume, intercom volume, broadcastig volume, line volume. (Automatically used when performing tasks)

Enable: Check the box to use your own default volume; uncheck the box to use the global default volume.



<3> IP Set: similar to the login setting, click the input box, enter your information, and then confirm.



<4> Display Set:

1. Screen time: 30s, 60s, 300s, 600s
2. Sort Set: sort by ID or by name
3. Display: List view or grid view available
4. Paging Mixing: Mix or no mixing
5. Line Mixing: Mix or no mixing



CAUTION: Do not open the equipment cover arbitrarily, so as not to electric shock. Please contact the professionals to maintain if necessary.